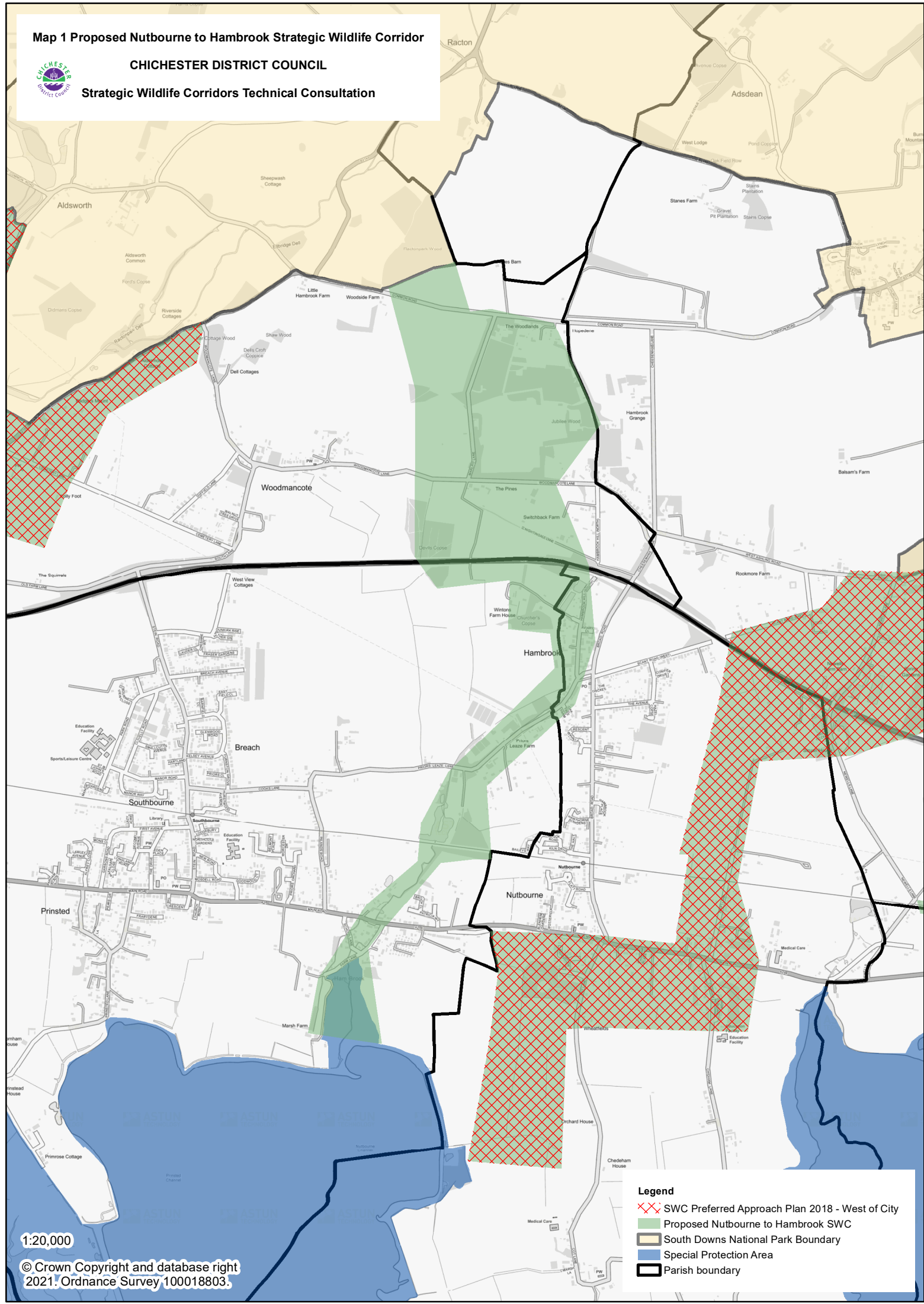


Map 1 Proposed Nutbourne to Hambrook Strategic Wildlife Corridor



CHICHESTER DISTRICT COUNCIL

Strategic Wildlife Corridors Technical Consultation



Legend

- ✕✕ SWC Preferred Approach Plan 2018 - West of City
- Proposed Nutbourne to Hambrook SWC
- South Downs National Park Boundary
- Special Protection Area
- Parish boundary

1:20,000

© Crown Copyright and database right
2021. Ordnance Survey 100018803.